



Renaissance at The Terraces

Memory Services | Assisted Living



Welcome

Thank you for considering Renaissance at The Terraces.

This packet of information is offered to assist you in learning more about The Terraces at Bonita Springs and all we have to offer. At The Terraces, our full continuum of on-site health services gives residents and their families great comfort in knowing they have a firm plan in place for the future. All levels of care, including assisted living, memory support, skilled nursing and rehabilitation, are open for direct admittance without a large entrance fee. Our exceptional care and life-enriching services and amenities promote a fulfilling, thriving lifestyle.

We work directly with residents to tailor a plan that works best according to their personal needs, schedules and preferences. Together we can assure that each resident enjoys an enriching life with maximum independence in our gorgeous Bonita Springs community, located between Naples and Fort Myers.

I'd like to invite you to visit us on our website at **TheTerracesAtBonitaSprings.com**, where you can learn more about The Terraces at Bonita Springs and the various services we offer.

We hope this information will be helpful and look forward to assisting you with your senior living needs. We would appreciate the opportunity to help you explore options and answer any questions. Please contact us at **239-221-8907** if you are interested in scheduling an appointment.

Warm Regards,

Senior Living Counselors
239-221-8907

Services & Amenities



- Direct admittance with no large entrance fee
- Three chef-prepared meals daily, served in a private dining room
- Access to a full continuum of on-site health care services
- Medical director and registered dietitian
- Medication monitoring and administration
- Wellness programs
- Rehabilitative therapy services
- State-of-the-art equipment and treatment programs
- Move-in coordination support
- 24-hour security and emergency call system
- Gated community
- Sprinkler system and smoke detectors
- Fire-rated and sound-resistant construction
- Emergency power generators
- Residence and grounds maintenance
- Beauty salon, barbershop and spa services
- Housekeeping, daily bed making, and personal laundry service available
- Individually controlled heating and air conditioning

Assisted Living

- 24-hour licensed nurses available
- All-inclusive pricing
- Assistance with activities of daily living
- Spacious one- and two-bedroom residences, complete with a kitchenette and full bath
- All utilities and basic cable provided, except telephone
- Social and life-enrichment activities
- Large arts and crafts studio
- Outdoor terraces for dining
- Dedicated fitness center
- Outdoor courtyard and beautifully landscaped grounds
- Well-appointed common areas, including a TV room, library, lounge areas and media room
- Scheduled complimentary transportation available

Memory Support

- 24-hour licensed nurses available
- 24-hour Certified Nurse's Aide assistance
- Recreational therapist
- Secure environment
- Dedicated professionals specially trained to care for those with memory loss
- Personalized care plan tailored to meet unique needs and preferences
- Spacious, private studio residences with full private baths
- All utilities provided, including basic cable
- All-inclusive pricing
- Memory boxes to help residents locate their residence independently
- Spacious activity and common areas designed to promote social interaction
- Enclosed courtyard for safe outdoor activities such as walking and family visits
- Interactive and socially stimulating programming designed for those with memory loss

Skilled Nursing

- 24-hour licensed nurses available
- TV room, library and lounge area
- Fully furnished private suites with a personal bath
- Flat-screen TV in each resident's residence
- All utilities included, including basic cable and local telephone service
- Social and recreational activities and events
- Physical, speech and occupational therapies
- Industry-leading staff ratios
- Short-term rehabilitative care
- Long-term residential care
- Post-surgical care
 - IV therapy
 - Pain management
- Specialized wound care
- Orthopedic rehabilitation
- Full-time lifestyle staff

Dining



Welcome to Renaissance at The Terraces. We enhance residents' lives by creating foods that are alive with flavor and nutrition while using wholesome ingredients. Our team always has your satisfaction in mind and is committed to making your dining experience enjoyable. Please inform any of our associates if there is anything we can do to make your dining experience more pleasant.

Dining Room

Relax and enjoy our meals in one of our dining rooms. You're welcome to dine on either floor. Our daily and always available menus are presented outside each dining area for your review. We also have an always available menu with additional selections for each meal.

DINING TIMES

Second Floor

Breakfast	7:30 a.m. – 8:30 a.m.
Lunch	11:30 a.m. – 12:30 p.m.
Dinner	4:30 p.m. – 5:30 p.m.

Third Floor

Breakfast	8:30 a.m. – 9:30 a.m.
Lunch	12:30 p.m. – 1:30 p.m.
Dinner	5:30 p.m. – 6:30 p.m.

Room Service

While our menu presentation is best enjoyed in a social environment, we understand that you may not be able to come to the dining room on occasion. If you feel that you are unable to come to the dining room due to an illness, please contact the nursing staff for assistance. If tray services are desired, a \$5 charge will be applied.



Where Loving-Kindness Lives

The Terraces at
Bonita Springs

Independent Living | Assisted Living | Memory Support | Skilled Nursing | Rehabilitation
26475 S. Tamiami Trail | Bonita Springs, FL 34134 | TheTerracesAtBonitaSprings.com

Assisted Living Facility License #12385 | COA #08075 

Guest

Dining with family and friends is always encouraged. Guests may join you in the dining rooms or in one of our private dining rooms. Please communicate all guests to our Concierge. In order for the Chef and service team to plan accordingly for each meal, all guest reservations must be made 24 hours in advance.

Due to limited seating arrangements in our dining rooms, we ask family members and guests not dining to socialize outside our dining room hours so we have ample seating for all diners.

Adult Beverages

If you enjoy a glass of wine, beer or cocktail at dinner, please ask to see our wine and spirits menu. Please understand there is a limit to the number of beverages we can provide you.



Cost Comparison Worksheet

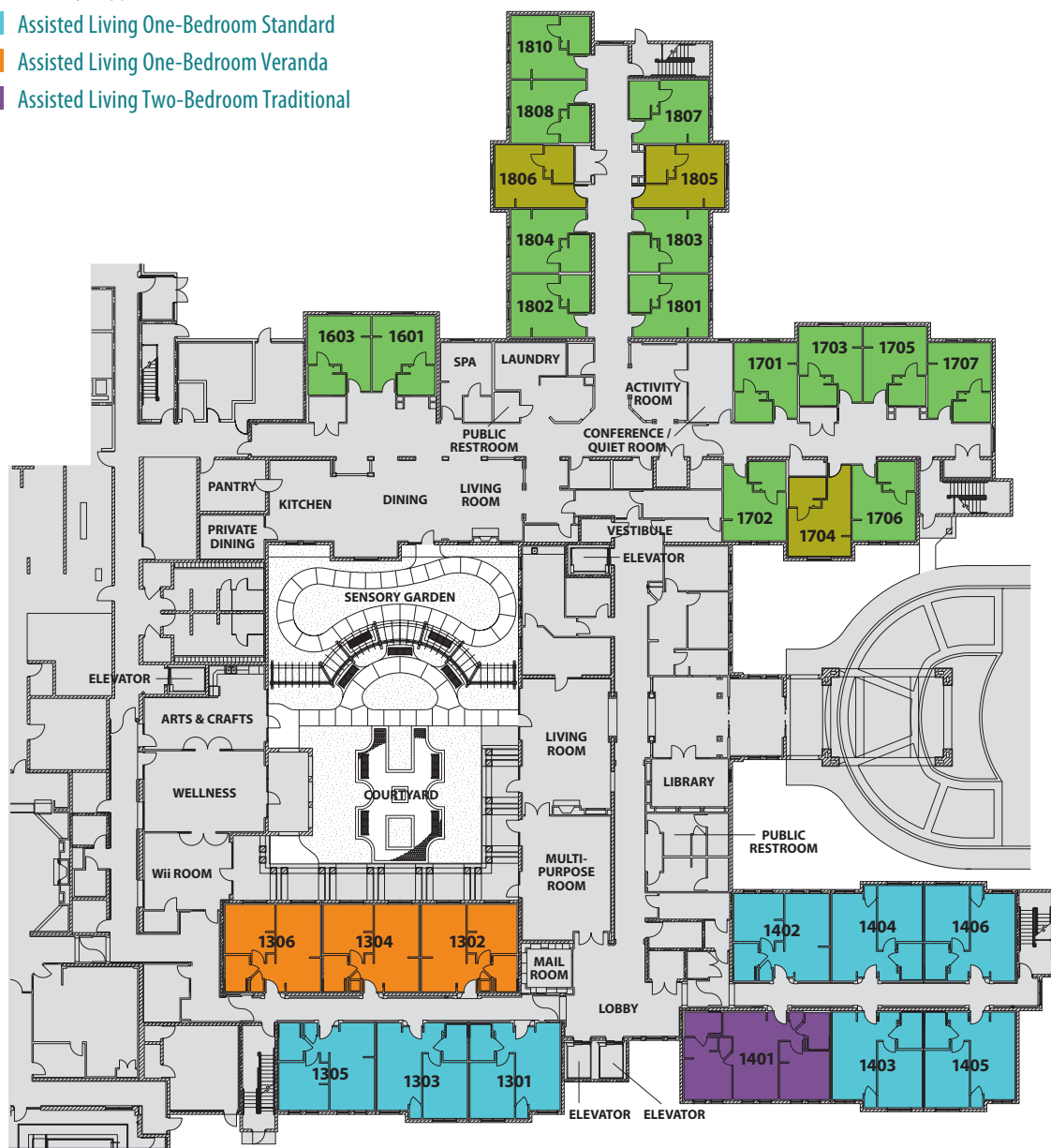
Your current expenses vs. Renaissance at The Terraces

This worksheet is intended to help you compare the costs of your current living situation to those of senior living.

Monthly Living Expenses	Current Expenses	Renaissance at The Terraces
Mortgage or Rent Payment	\$	\$
Caregiving Fees	\$	Included
Property Tax and Insurance	\$	Included
Utility Payments (gas, electric and water)	\$	Included
Home/Renters Maintenance	\$	Included
Lawn Care	\$	Included
Limited Transportation	\$	Included
Meals	\$	Included
Emergency Call System	\$	Included
Social Events/Activities	\$	Included
Exercise Programs	\$	Included
Housekeeping	\$	Included
Other	\$	\$
TOTALS	\$	\$

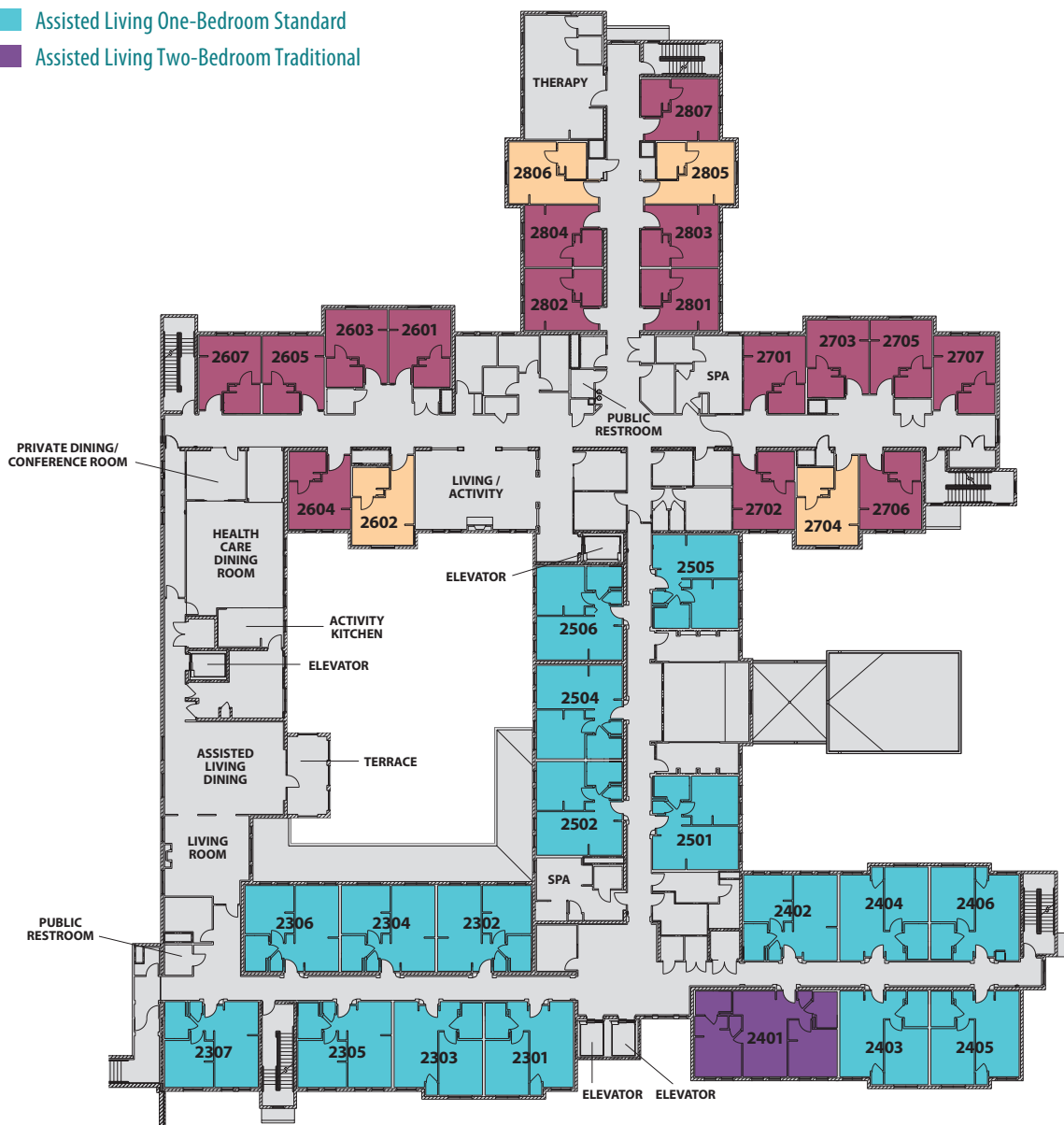
Level One

- Memory Support Studio
- Memory Support Studio Deluxe
- Assisted Living One-Bedroom Standard
- Assisted Living One-Bedroom Veranda
- Assisted Living Two-Bedroom Traditional



Level Two

- Skilled Nursing Studio
- Skilled Nursing Studio Alcove
- Assisted Living One-Bedroom Standard
- Assisted Living Two-Bedroom Traditional



Level Three

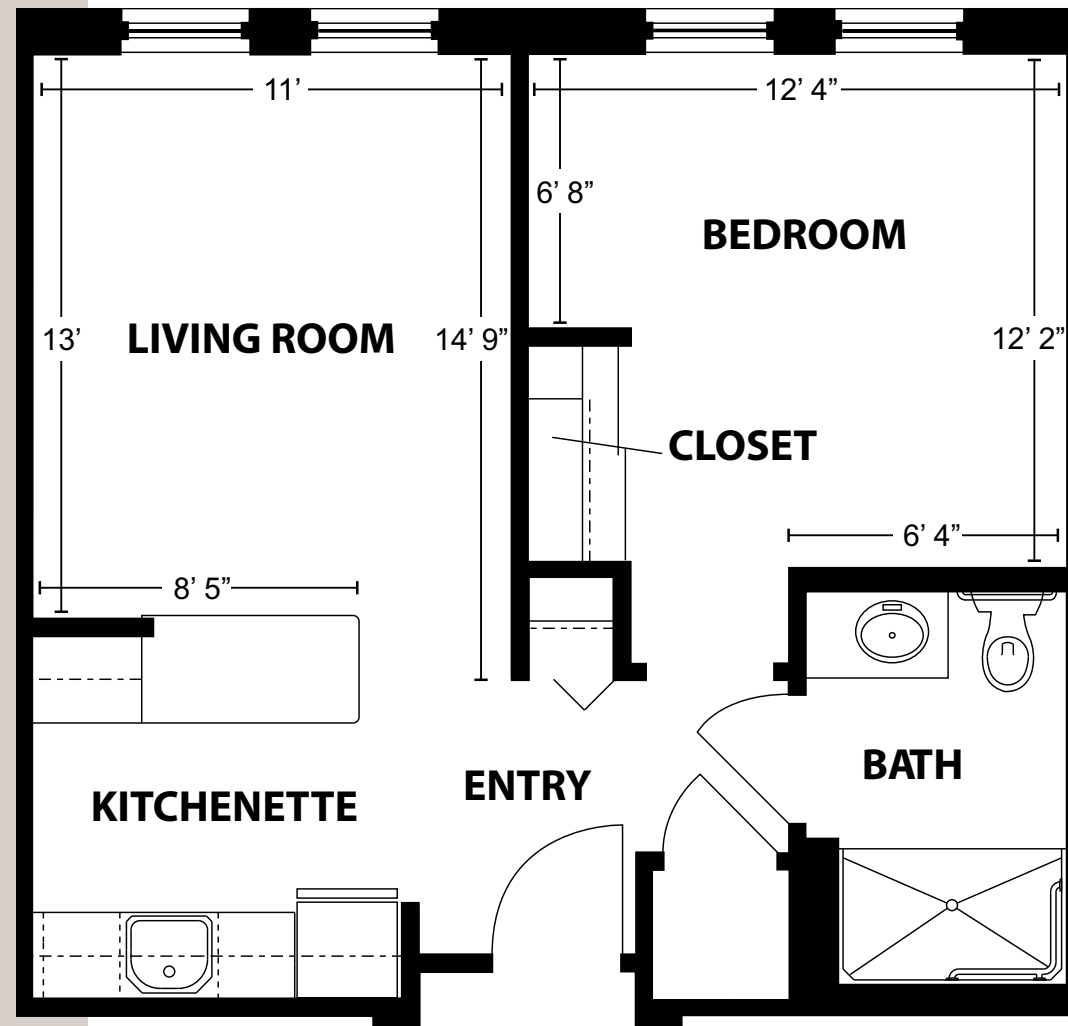
- Skilled Nursing Studio
- Skilled Nursing Studio Alcove
- Assisted Living One-Bedroom Standard
- Assisted Living Two-Bedroom Traditional
- Assisted Living Two-Bedroom Grand



Assisted Living

One-Bedroom Standard

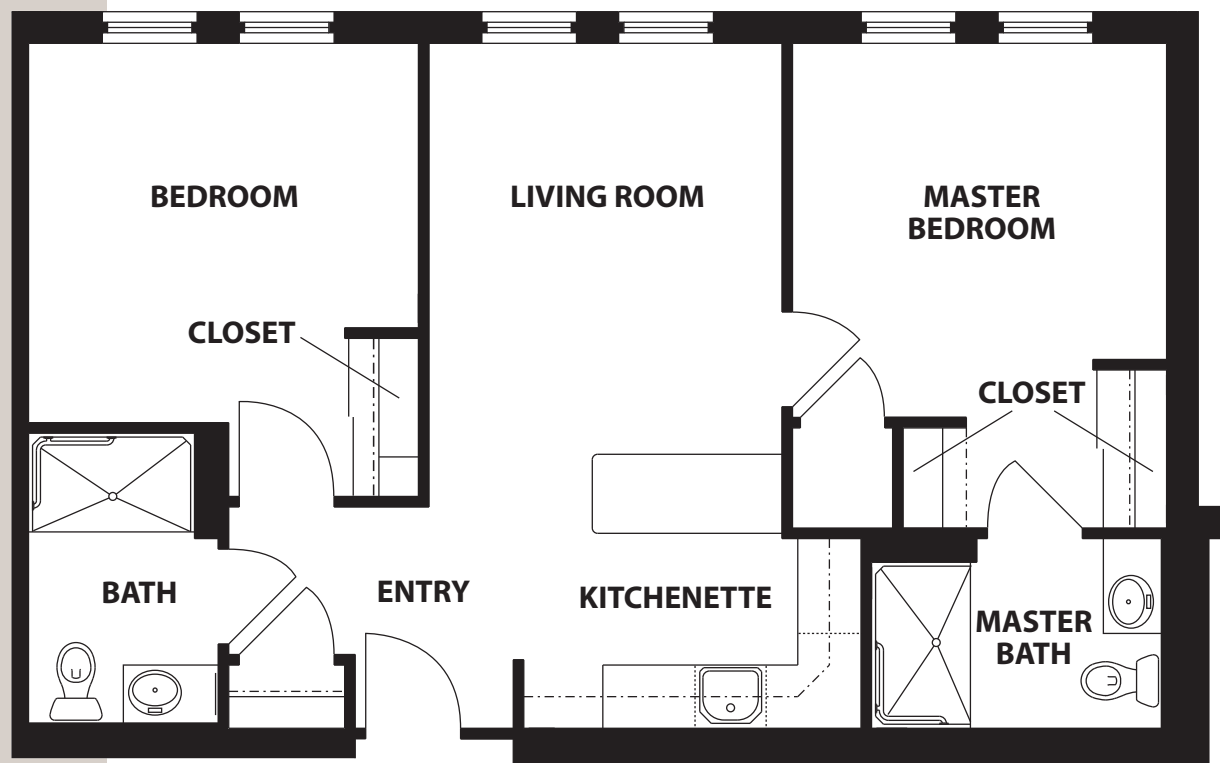
543 SQUARE FEET



Assisted Living

Two-Bedroom Traditional

831 SQUARE FEET



Memory Support

Suite

320 SQUARE FEET

